

### Specifications

Model	Z-60/34	
Measurements	Metric	US
Working height maximum*	20.39 m	66 ft 4 in
Platform height maximum	18.39 m	60 ft 4 in
Horizontal reach maximum	11.05 m	36 ft 3 in
Up and over clearance maximum	8.23 m	27 ft
<b>A</b> Platform length - 8 ft / 6 ft model	0.91 m / 0.76 m	3 ft / 2 ft 6 in
<b>B</b> Platform width - 8 ft / 6 ft model	2.44 m / 1.83 m	8 ft / 6 ft
<b>C</b> Height - stowed	2.69 m	8 ft 10 in
<b>D</b> Length - stowed	8.15 m	26 ft 9 in
<b>E</b> Width	2.46 m	8 ft 1 in
<b>F</b> Wheelbase	2.51 m	8 ft 3 in
<b>G</b> Ground clearance - center	0.41 m	1 ft 4 in

### Productivity

Lift capacity	227 kg	500 lbs
Platform rotation	180°	180°
Vertical jib rotation	90°	90°
Turntable rotation	360° continuous	
Turntable tailswing	zero	zero
Drive speed - stowed 2WD - 4WD	5.1 km/h	3.2 mph
Drive speed - raised**	30 cm/s	1 ft/s
Lift speed to full height	42 sec	42 sec
Gradeability - 2WD - stowed***	25%	25%
Gradeability - 4WD - stowed***	40%	40%
Turning radius - inside	2.80 m	9 ft 2 in
Turning radius - outside	5.70 m	18 ft 9 in
Controls	12V DC proportional	
Tyres	355/55 D625	

### Power

Power source	Deutz D2011L03i 3-cylinder diesel 35.8 kW (48 hp) Ford DSG-423 4-cylinder gas/LPG 56 kW (75 hp) Perkins 404D-22 4-cylinder diesel 38.0 kW (51 hp)	
Auxiliary power unit	12V DC	12V DC
Hydraulic tank capacity	170.3 L	45 gal
Fuel tank capacity	75.7 L	20 gal

### Sound & Vibration Levels

Sound pressure level (ground workstation)	84 dBA	84 dBA
Sound pressure level (platform workstation)	75 dBA	75 dBA
Vibration	<2.5 m/s <sup>2</sup>	<8 ft 2 in/s <sup>2</sup>

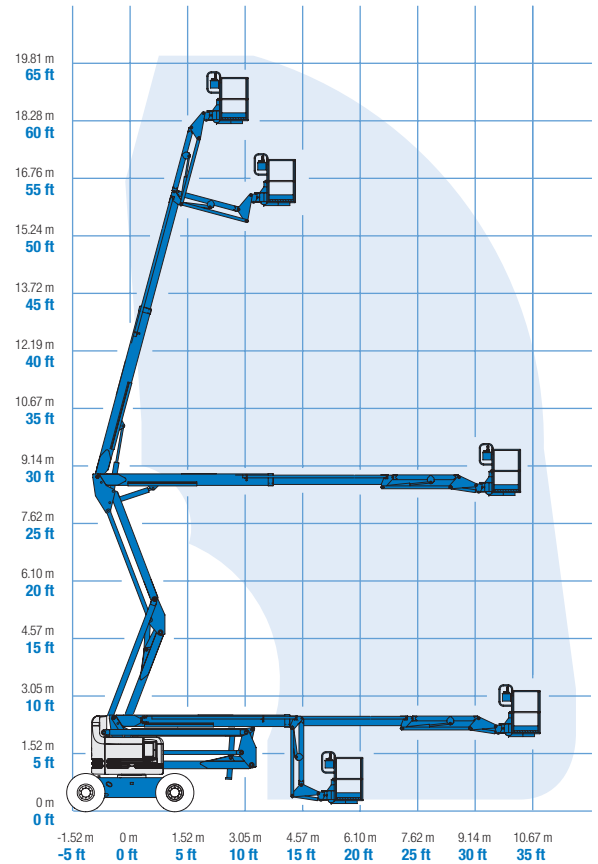
### Weight\*\*\*\*

CE 4WD (air tyres)	10,215 kg	22,520 lbs
CE 4WD (foam filled tyres)	11,231 kg	24,760 lbs
CE Max	11,331 kg	24,980 lbs

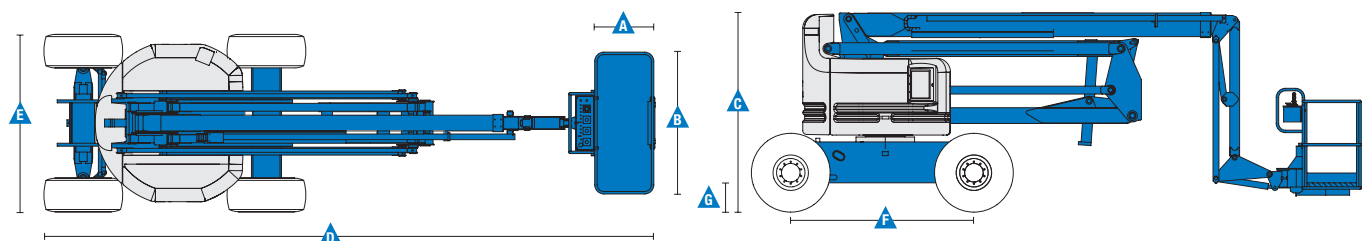
### Standards Compliance

EU Directives: 2006/42/EC - Machinery  
(harmonized standard EN280:2001+A2:2009); 2004/108/EC (EMC); 2000/14/EC (Outdoor Noise)

### Range Of Motion Z-60/34



\* The metric equivalent of working height adds 2 m to platform height. U.S. adds 6 ft to platform height.  
\*\* In lift mode (platform raised), the machine is designed to operate on firm, level surfaces only.  
\*\*\* Gradeability applies to driving on slopes. See operators manual for details regarding slope ratings.  
\*\*\*\* Weight will vary depending on options and/or country standards.



## Features

Standard Features	Easily Configured To Meet Your Needs	Options & Accessories
-------------------	--------------------------------------	-----------------------

### Measurements

- 20.39 m (66 ft 4 in) working height
- 11.05 m (36 ft 3 in) horizontal reach
- 8.23 m (27 ft) up and over clearance
- Up to 227 kg (500 lbs) lift capacity

### Productivity

- Self-levelling platform
- Hydraulic platform rotation
- Half mesh platform inserts with swing gate <sup>(1)</sup>
- Fully proportional controls
- Thumb rocker steering
- Drive enable
- AC power cord to platform
- Horn
- Hour meter
- Tilt alarm
- Descent & travel alarms
- Flashing beacon
- 360° continuous turntable rotation
- Locking turntable covers
- Zero tailswing
- Positive traction drive
- 2 speed wheel motors
- Certified load sensor

### Power

- 12V DC auxiliary power
- Engine protection package
- Anti-restart engine protection
- Auto engine fault shutdown
- Intake air heater (Deutz engine)

### Platform Options

- Steel 2.44 m (8 ft) (standard)
- Steel 1.83 m (6 ft)
- 2.44 m (8 ft) tri-entry\*\*

### Jib

- Articulating 1.83 m (6 ft) jib boom

### Engine Options

- Deutz diesel 35.8 kW (48 hp)
- Ford gas/LPG 56 kW (75 hp)
- Perkins diesel 38 kW (51 hp)

### Drive Options

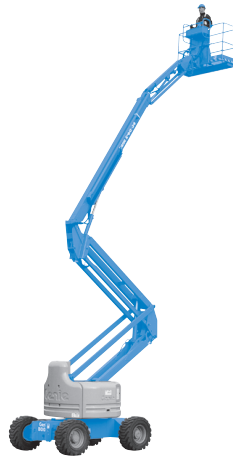
- 2 x 4
- 4 x 4

### Axle Options

- Active oscillation (standard on 4WD)
- Non-oscillating

### Tyre Options

- Rough terrain air-filled (standard)
- Rough terrain foam-filled
- Rough terrain non-marking (air or foam-filled)
- Sealant treated air-filled



### Productivity Options

- Platform swing gate
- Half mesh platform inserts with swing gate
- Platform top auxiliary rail
- Weld leads to platform <sup>(2)</sup>
- Hydraulic oil cooler <sup>(3)</sup>
- Air line to platform
- Power to platform (incl. plug, socket and ground fault interrupt leakage on request)
- Work lights package (2 on chassis, 2 on platform)
- Dual axis joystick steering
- Biodegradable hydraulic oil <sup>(2)</sup>
- Aircraft protection kit <sup>(2,3)</sup>: platform foam padding and padded disable system
- Hostile environment kit <sup>(2)</sup>: cylinder bellows, boom wiper seals platform and ground control box covers
- Deluxe hostile environment kit <sup>(2,3)</sup> adds to basic kit center turntable shield, ring gear guard, tail pipe guard, engine cover flaps and air pre-cleaner
- Tilt cut-out option
- Track & Trace <sup>(4)</sup> (GPS unit providing machine location & operating information)
- Panel cradle package <sup>(2,3)</sup>
- Lockable platform control box covers
- Tool tray

### Power Options

- Engine gauge package
- AC generator packages (110V/60Hz 220V/50Hz, 3000W) <sup>(2)</sup>
- Hydraulic MTE Generator kit (110V/120V-220V/240V)
- Diesel air intake pre-cleaner <sup>(2,3)</sup>
- Diesel catalytic scrubber muffler <sup>(2)</sup>
- LPG tank 15.19 kg (33.5 lbs) capacity <sup>(2,3)</sup>
- Low temperature cut-out module
- Engine heater <sup>(3)</sup>
- Refinery kit with spark arrestor and electric or mechanical Chalmers valve <sup>(3)</sup>

<sup>(1)</sup> Not available on tri-entry platforms

<sup>(2)</sup> Factory-fit option only

<sup>(3)</sup> Available on selected models only. See your Genie representative for further information.

<sup>(4)</sup> Includes a first 2 years subscription

## United Kingdom

The Maltings, Wharf Road, Grantham NG31 6BH, T: +44 800 988 3739 (toll free), Fax +44 (0)1476 584334, Email AWP-InfoEurope@terex.com

Visit [www.genielift.co.uk/locations](http://www.genielift.co.uk/locations) to view our global locations list.

## Worldwide Manufacturing And Distribution

Australia · Brazil · Caribbean · Central America · China · France · Germany · Italy · Japan · Korea · Mexico · Russia · Southeast Asia · Spain · Sweden · United Arab Emirates · United Kingdom · United States

Effective Date: October, 2012. Product specifications and prices are subject to change without notice or obligation. The photographs and/or drawings in this document are for illustrative purposes only. Refer to the appropriate Operator's Manual for instructions on the proper use of this equipment. Failure to follow the appropriate Operator's Manual when using our equipment or to otherwise act responsibly may result in serious injury or death. The only warranty applicable to our equipment is the standard written warranty applicable to the particular product and sale and we make no other warranty, express or implied. Products and services listed may be trademarks, service marks or trade names of Terex Corporation and/or their subsidiaries in the USA and many other countries. Genie is a registered trademark of Terex South Dakota, Inc. © 2012 Terex Corporation.

